

A white board with a grid of colorful circular holes, some containing colored discs. The holes are arranged in a grid pattern, and the colors of the discs include red, yellow, blue, green, and white. The board is slightly angled, and the lighting creates soft shadows.

# Left on Read: Reply Latency for Anxiety & Depression Screening

---

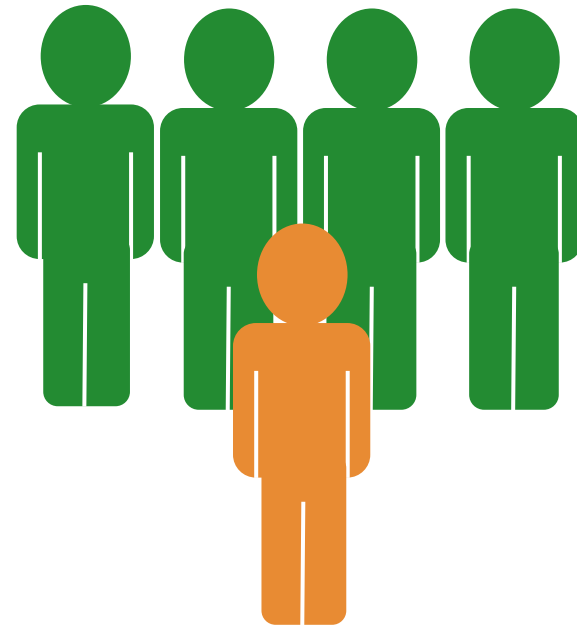
ML TLACHAC, *BRYANT UNIVERSITY*

SAMUEL S. OGDEN, *CSUMB*

# Mental Illnesses are Prevalent and Costly

---

Annually, more than  
**1 in 5**  
U.S. adults experience  
mental illnesses

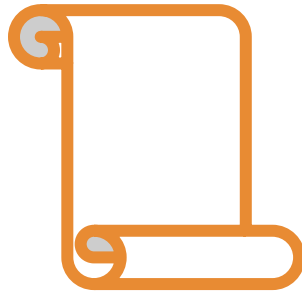


# Mental Illness Screening Options

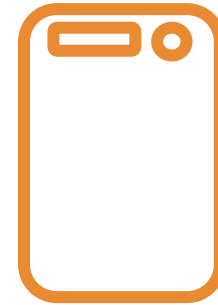
---



Interview



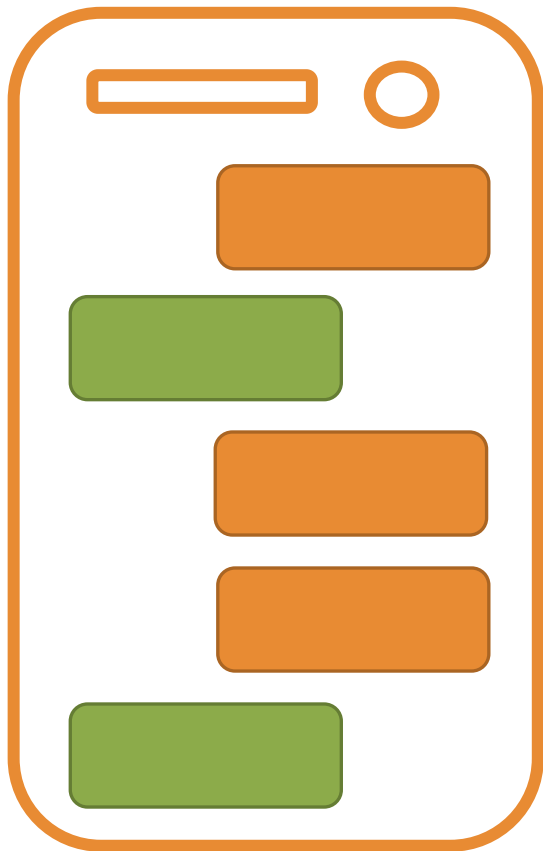
Survey



App

# Reply Latency for Mental Illness Screening

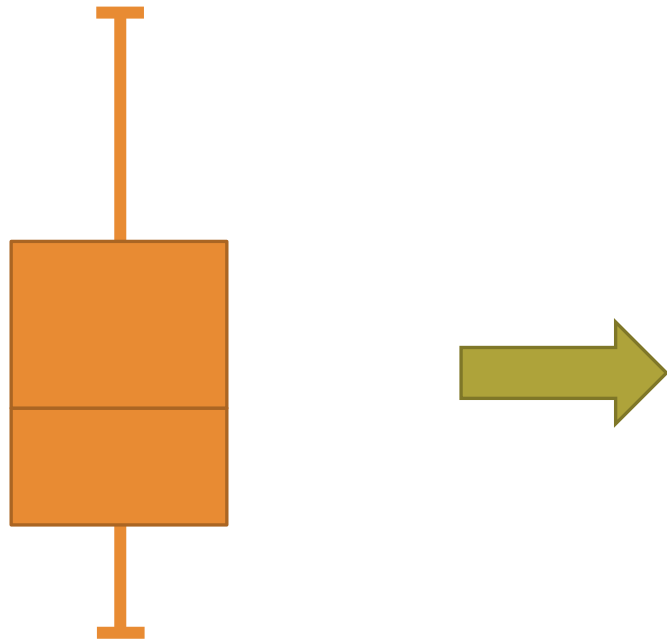
---



Number of seconds between receiving and sending a text message

# Reply Latency Distribution & Features

---



1. Number of contacts
2. Number of replies
3. Minimum latency
4. 10% quantile latency
5. 25% quantile latency
6. 50% quantile latency
7. 75% quantile latency
8. 90% quantile latency
9. Maximum latency

# Crowd-Sourced Datasets

---

Dataset	Collected	Data Labels	Participants with 7+ replies
DepreST-CAT	After COVID-19	PHQ-9 (depression), GAD-7 (anxiety)	49
Moodable/EMU	Before COVID-19	PHQ-9 (depression)	46



At scores for moderate depression and anxiety, classes are relatively balanced

Data References:

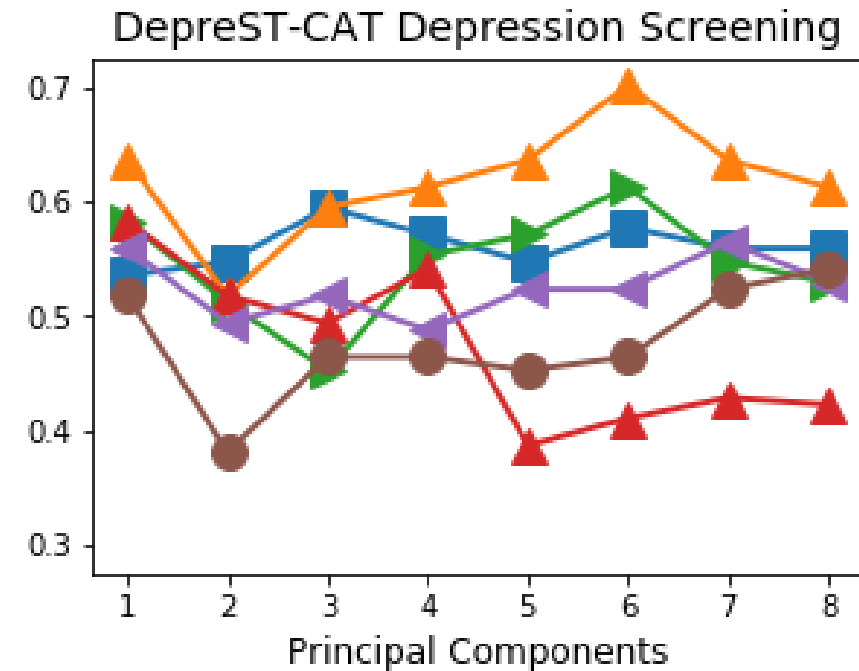
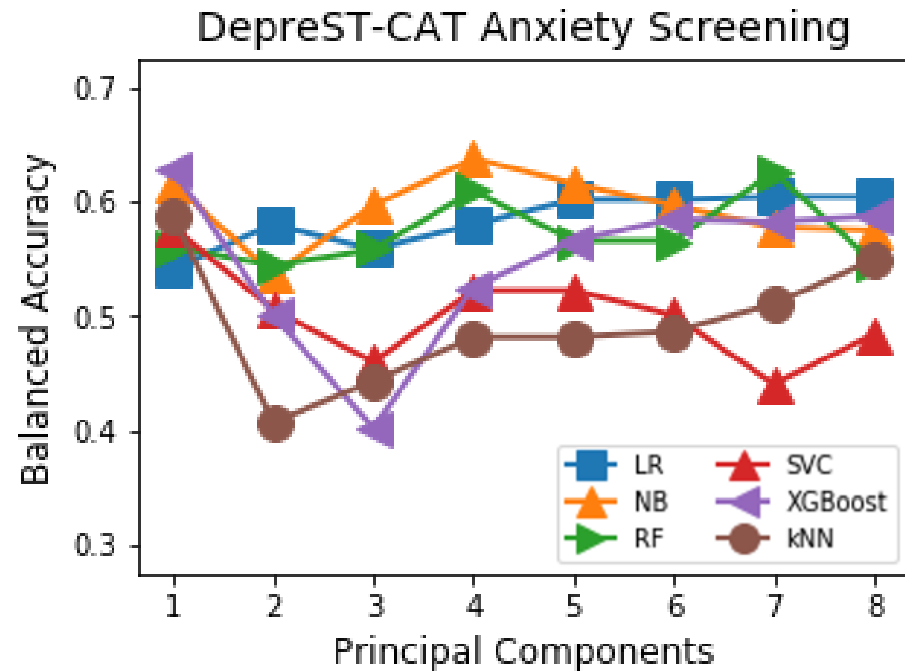
Tlachac et al, "DepreST-CAT", IMWUT, 2022

Tlachac et al, "EMU", ICMLA, 2021

Dogrucu et al, "Moodable", Smart Health, 2020

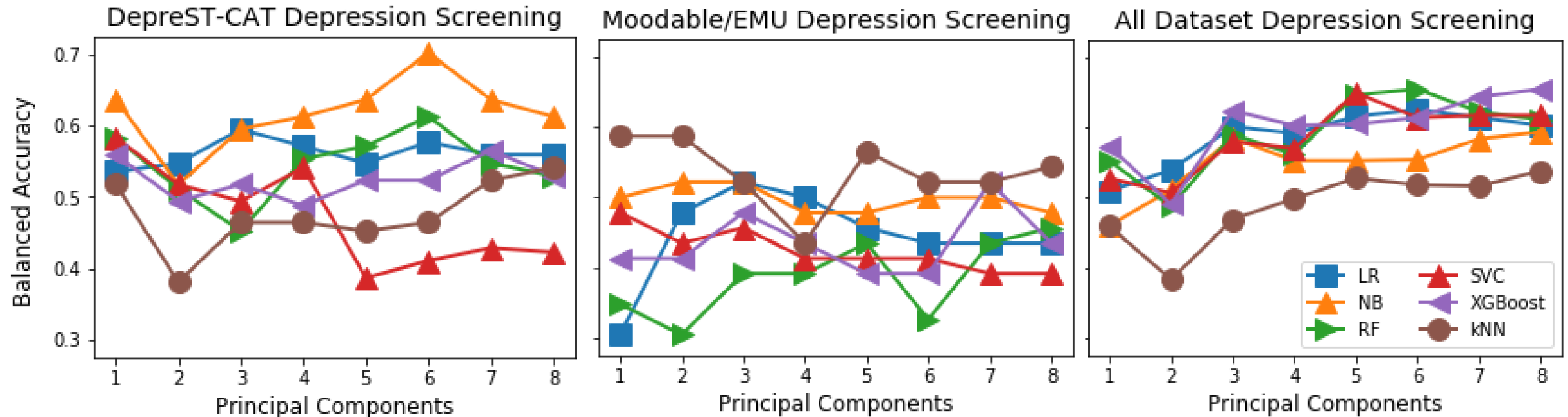
# DepreST-CAT Modeling Results

---



Leave-One-Out Cross-Validation

# Depression Modeling Results



Leave-One-Out Cross-Validation

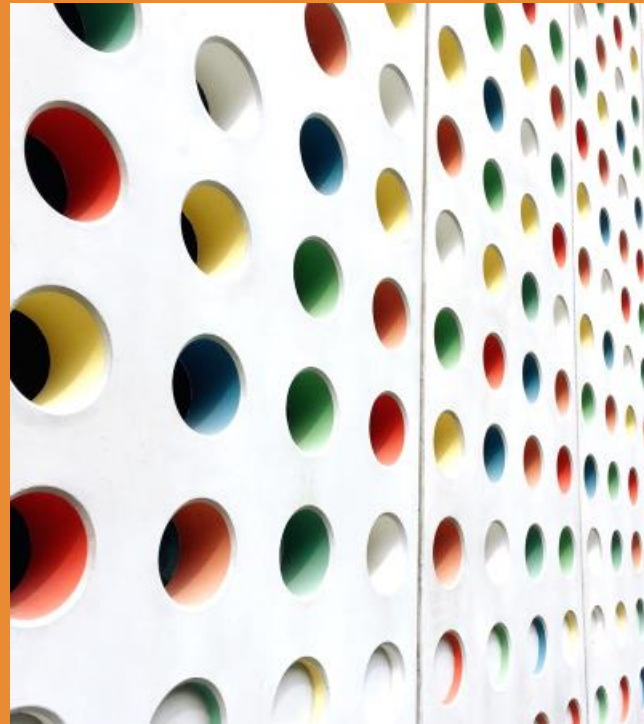


# Takeaways of Using Reply Latency Features

---

1. Reply latency preserves privacy when mental illness screening
2. Screened for anxiety with a balanced accuracy of 0.62
3. Screened for depression with a balanced accuracy of 0.70 with the same participants
4. Comparable results when combining datasets collected before and after COVID-19
5. Reply latency features demonstrate generalizability for mental illness screening
6. Future digital phenotype research should consider adding reply latency features

Thank You!  
Questions?  
[mltlachac@bryant.edu](mailto:mltlachac@bryant.edu)



## Left on Read: Reply Latency for Anxiety & Depression Screening

ML TLACHAC, *BRYANT UNIVERSITY*

SAMUEL S. OGDEN, *CSUMB*



# EMUTIVO

[emutivo.wpi.edu](http://emutivo.wpi.edu)